

Company Overview



Providing complete protection from A to Zinc

Capability Statement:

Hartway is always a good first step when you need to explore options to protect your steel assets.

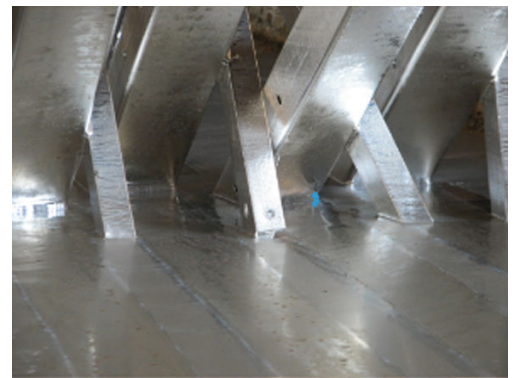
It all started in 1984 and has grown to two galvanizing plants in Western Australia and a walkway and steel fabrication business.

With a century of combined management experience and a galvanizing capacity in excess of 60,000 tonnes per year, Hartway has the facilities to be your best choice of partner for the largest projects in the State.

Our local presence guarantees quality, gives you easy access to the decision makers, shortens supply windows and upholds superior service.

Hartway's two plants operates a total of 9 semi-trailers and 2 x 14 tonne rigids to help our customers with pick-ups and deliveries that they may not manage on their own. Naval Base has a 25 tonne forklift for cradle work unloading / loading and both plants operate numerous yard forklifts up to 5 tonne capacity

Any queries or quotes needed please email Wayne at marketing@hartwaynb.com.au or call on 9410 1055.



HARTWAY GALVANIZERS

46 Hope Valley Rd, Naval Base,
Western Australia, 6165
T: (08) 9410 1055
F: (08) 9410 1066
E: sales@hartwaynb.com.au

10 Sherman St, Canning Vale,
Western Australia, 6155
T: (08) 9455 1713
F: (08) 9455 4095
E: sales@hartway.com.au

W: <https://www.hartway.com.au>



Engineering and Manufacturing Industry Cooperative Limited

See the Tech Spec over the page for detailed capabilities

Section 4

Technical Specifications

HARTWAYS NAVAL BASE PLANT

PROFILE:

TELEPHONE: 9410 1055 FAX: 9410 1066 ABN: 33457796718
LOCATION: 46 Hope Valley Road, Naval Base (next to Pacific Industrial)
BATH SIZE: 12.6m long X 1.4m wide X 3m deep

- Computerised job tracking
- 3000 tonnes per month capacity,
- longest dip achieved 23m,
- heaviest single dip achieved 10 tonne,
- 5 x gantry cranes with load capacity of 10 tonne each
- Specialised packing options can be arranged.
- 25 tonne forklift for cradle/container loading with ease
- 12 x site forklifts from 2.5t - 5t capacity
- 5 acres of project laydown – 10 acres in total

KEY CONTACTS

- Works Manager - Paul Edmondson
- Production - Ertogrul (Aiden) Aydener
- Project Management- Gavin Bowey
- QA - Mihai Benea.
- Sales/Marketing - Wayne Stewart – Quoting, quality, venting advice
- Despatch - Mukeba Beloti and Sandy Murray– job status, delivery, pickups

HARTWAYS CANNING VALE PLANT

PROFILE:

TELEPHONE: 9455 1713 FAX : 9455 4095 ABN: 51136752381
LOCATION: 10 Sherman Street, Canning Vale.
BATH SIZE: 12.6m long X 1.4m wide X 2.7m deep

- 2000 tonnes per month capacity,
- Centrifuge plant for small brackets and threaded components.
- Specialised packing options can be arranged.
- 30 years of “silver” service

KEY CONTACTS

- Works Manager - Chris Nash
- Production - Aaron Best
- Sales/Technical - Wilson Hiong – Quoting, quality, venting advice
- Despatch - Brett Gandy– job status, delivery, pickups

